



A control strategy
where seeing is doing.

**FACILITY
EXPLORER**

BY JOHNSON CONTROLS



Made to work
everywhere.
Tailored to work
where you are.

It's a whole new world in there. Efficient building management has never been more complex or critical. Saving energy and reducing operating costs are standard policy. Wireless control of your systems and web accessibility are givens.



What will it take to expand the possibilities and effectiveness of your building management?

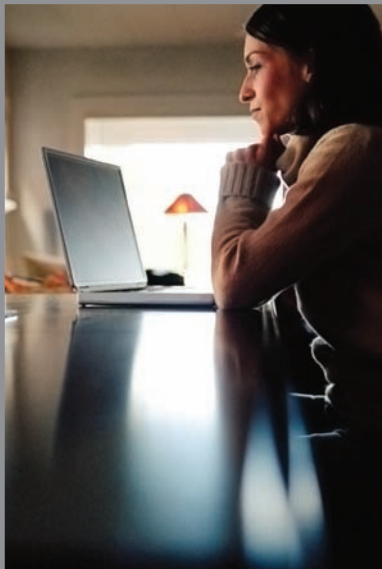
Facility Explorer from Johnson Controls now gives you more ways to apply advanced control technology to fit the way you work today. No matter what kind of facility you operate, no matter where you are. Because the days of sitting at a workstation are long gone.

With Facility Explorer, you get increased visibility into building operations so you can resolve problems faster and easily. On-site or remotely. You can modify equipment and system control parameters to maximize efficiency and comfort from your mobile device. Plus, we've made it easy to customize applications for your enterprise. No special tools. No add-ons. Just the commitment to create a control system tailored to your specific requirements.





Keeping you in the know.



The more you can see how your facility is performing, the more you'll know how to reduce costs and improve comfort. Facility Explorer supervisory controllers are the brains behind the operation of your buildings. We've engineered them so you can build a control application in minutes with pre-built and tested control modules. Easy to navigate screen graphics allow you to customize control schemes and simulate operating conditions. No need to be a techy programmer. Facility Explorer control technology will automatically create a data base of HVAC equipment performance information, energy use, alarms and more. Plus, we've added innovative out-of-the box applications scalable to your building, like chiller optimization, that will improve the way you manage equipment efficiency and lifecycle costs.

What are the costliest aspects of operating facilities? Energy use. Equipment wear and tear. And your time. We've designed Facility Explorer to help you better manage all of those. Continuous loop tuning. Wireless communications. Improved user interface. Advancements like these make your job easier and put more critical information at your fingertips.

High technology without the high maintenance.

As enterprises grow more sophisticated and facilities spread out, it doesn't change your job. You still have to manage costs and deliver facilities that ensure comfort and productivity. We've designed Facility Explorer to make this job easier. Even though buildings aren't physically connected, they can talk to each other. Facility Explorer technology not only gives you industry-leading accessibility over the web, you can also link building information over cell networks. This means you have greater flexibility to coordinate and control building operations enterprise-wide. Without making major investments in network communications infrastructure. And you have more capabilities to handle future expansion and upgrades.



FX-PCG2621



FX-PCG1611



TEC



FX20



TEC



FX-PCG1621



VSD



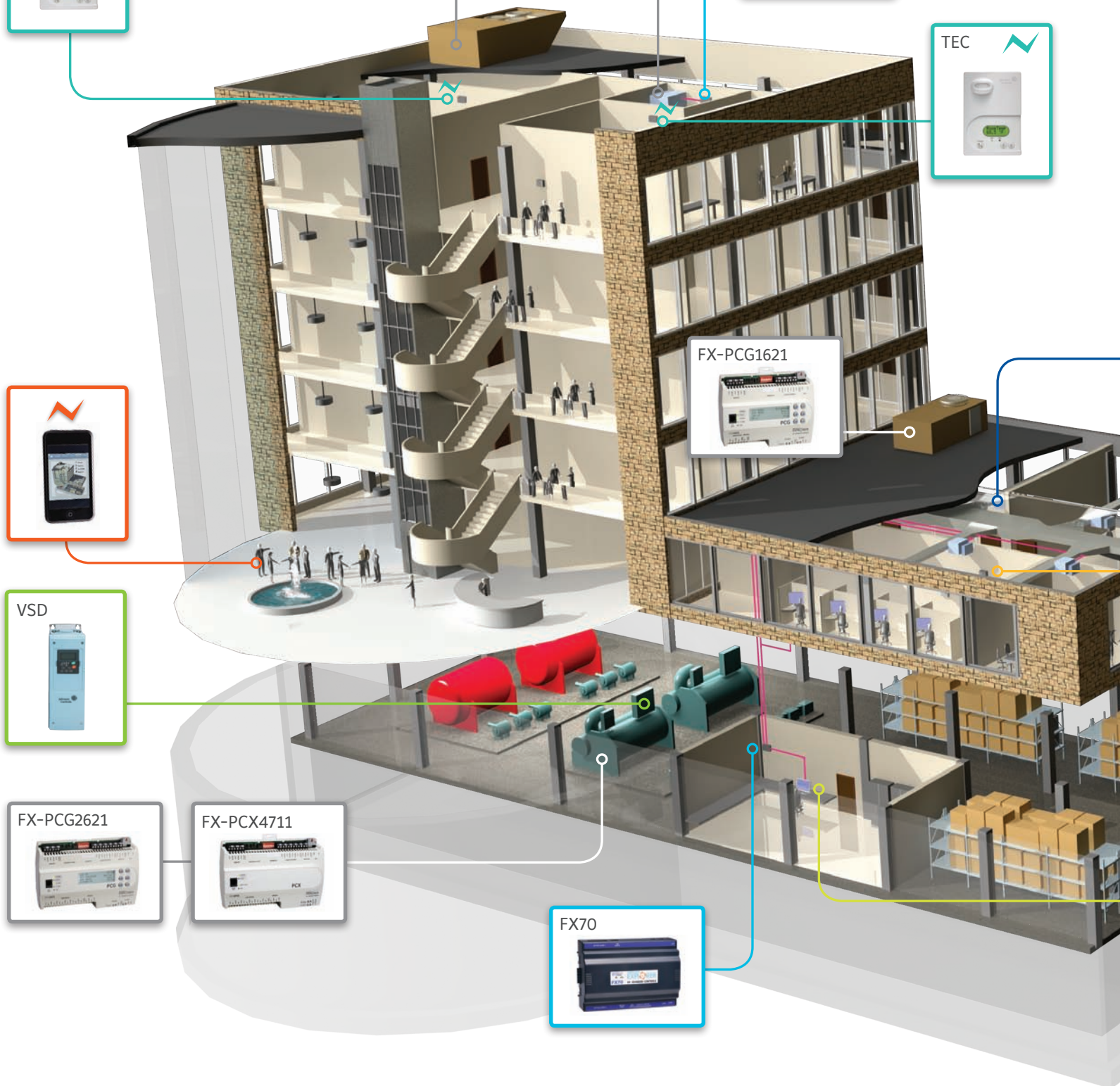
FX-PCG2621



FX-PCX4711



FX70



The more extreme your needs,
the more adaptable Facility Explorer is.

Facility Explorer meets any building management need. Wireless or wired field controllers and devices provide direct closed-loop control over mechanical and HVAC equipment. Supervisory controllers deliver network-wide coordination for single or multiple sites. The result is an integrated, comprehensive control solution.

- Easy to program and commission
- Multiple networking communications
- Seamless data sharing across your network
- Remote access via multiple communication technologies
- Easy to see, easy to use graphic user interface





With Facility Explorer technology from Johnson Controls,
you can create a building management system
that's as simple or as sophisticated as you need.

For details, see your Johnson Controls
Authorized Building Controls Specialist.

